

1995 Boys' Sweet Sixteen Action

semifinals

HARLAN

VS.

PLEASURE RIDGE PARK

March 18, 1995

**Rupp Arena
Lexington, Kentucky**

OFFICIAL STATISTICS BOOKLET

OFFICIAL NFSHS BASKETBALL BOX SCORE: *** FINAL ***
 Date: 03-18-95 Site: BOY'S SWEET 16, LEXINGTON

VISITORS (Last Name, First)

NO.	HARLAN	Tot FG		3-POINT		FT		Rebounds			PF	TP	A	TO	BLK	S	TIME				
		FG	FGA	FG	FGA	FT	FTA	OFF	DEF	TOT											
22	THOMAS, CHARLES	12	20	2	3	4	5	2	7	9	2	30	2	8	1	1	29:12				
40	SIMPSON, JEREMY	0	0	0	0	0	2	2	3	5	4	0	1	1	0	2	23:20				
44	COX, TODD	10	21	0	0	2	3	3	8	11	4	22	0	1	1	0	25:23				
10	LESTER, CASEY	7	13	0	3	4	4	0	3	3	3	18	4	5	1	0	26:26				
04	BLANTON, NATHAN	1	2	0	0	0	0	1	3	4	4	2	4	4	0	0	24:50				
12	HUDSON, KEVIN	0	1	0	1	0	0	2	3	5	5	0	2	5	0	0	23:54				
24	KAUFFMAN, JOEL	0	0	0	0	0	0	0	1	1	0	0	0	0	0	0	5:39				
11	COX, TRAVIS	1	1	0	0	0	0	1	0	1	0	2	0	0	0	0	1:16				
TEAM REBOUNDS (INCLUDED IN TOTALS)																					
TOTALS		31	58	2	7	10	14	13	29	42	23	74	13	25	3	3	160				
Percentages:		Game		FG		31/58		53.4%		3-PT.		2/7		28.6%		FT		10/14		71.4%	
Period 1						8/17		47.1%				1/1		100.0%				4/5		80.0%	
Period 2						7/10		70.0%				0/1		0.0%				2/4		50.0%	
Period 3						8/18		44.4%				1/2		50.0%				2/2		100.0%	
Period 4						8/13		61.5%				0/3		0.0%				2/3		66.7%	

HOME (Last Name, First)

NO.	PLEASURE RIDGE PARK	Tot FG		3-POINT		FT		Rebounds			PF	TP	A	TO	BLK	S	TIME				
		FG	FGA	FG	FGA	FT	FTA	OFF	DEF	TOT											
43	HOOVER, SHAWN	4	9	0	0	3	6	0	4	4	3	11	0	5	0	1	26:35				
32	NELSON, GILWAN	4	6	0	0	3	5	0	1	1	4	11	2	2	1	0	18:29				
42	LOCKHART, MIKE	0	0	0	0	2	2	0	2	2	3	2	0	1	0	0	7:10				
23	TAYLOR, DOMINICK	2	3	0	0	3	3	2	2	4	0	7	0	1	0	2	12:54				
15	TAYLOR, CHARLES	6	17	2	6	5	7	1	0	1	4	19	1	1	0	5	18:53				
30	IVORY, WILLIE	6	12	0	1	1	2	2	3	5	3	13	1	1	0	3	25:53				
25	MIMS, LARON	6	7	0	0	3	4	0	1	1	4	15	2	3	0	0	17:24				
21	FEY, BRANDON	0	0	0	0	3	4	0	2	2	1	3	0	0	0	1	15:43				
10	MCGOVERN, DAVID	0	2	0	1	0	0	0	0	0	0	0	0	0	0	3	13:56				
31	BEDFORD, GREG	0	0	0	0	0	0	0	0	0	0	0	0	0	0	0	3:03				
TEAM REBOUNDS (INCLUDED IN TOTALS)																					
TOTALS		28	56	2	8	23	33	5	16	21	22	81	6	14	1	15	160				
Percentages:		Game		FG		28/56		50.0%		3-PT.		2/8		25.0%		FT		23/33		69.7%	
Period 1						9/18		50.0%				1/4		25.0%				2/3		66.7%	
Period 2						7/16		43.8%				0/3		0.0%				5/5		100.0%	
Period 3						7/12		58.3%				1/1		100.0%				4/8		50.0%	
Period 4						5/10		50.0%				0/0		0.0%				12/17		70.6%	

OFFICIALS: Barry Barnes, Lyman Brown, Alt-Keith Clary
 Technicals: HARLAN Bench - 1;

SCORE BY PERIODS					
HARLAN	21	16	19	18	= 74
PLEASURE RIDGE PARK	21	19	19	22	= 81

Attendance: 13,105

COMMENTS:	POINTS OFF	TURNOVERS	SECOND CHANCE POINTS
HARLAN	16	28	14
PLEASURE RIDGE PARK	28	14	2

Produced by the KHSAA SWEET 16 Stat Crew with FINAL III - a Product of Stone Consulting (606)273-3941

Player	Team	PLEASURE RIDGE PARK	Time	Score	HARLAN	Player	Team
HOOVER, SHAWN, NELSON, GILWAN, LOCKHART, MIKE, TAYLOR, DOMINICK, TAYLOR, CHARLES			THOMAS, CHARLES, SIMPSON, JEREMY, COX, TODD, LESTER, CASEY, BLANTON, NATHAN			Ball to GREEN DRAGONS	
			1 7:56	0-2*	16 ft Right Angle Bank by COX, TODD	1-1	100% 1-1 100%
			1 7:26	0-5*	3 pt 22 ft Right Base Line Jump shot by THOMAS, CHARLES Assist by LESTER, CASEY	1-1	100% 2-2 100%
1	1	Foul on LOCKHART, MIKE	1 7:07			1	1
			1 7:07	0-7*	THOMAS, CHARLES, 2 Free Throws made both	2-2	100% 2-2 100%
			1 6:38	0-9*	10 ft Right Side Jump shot by THOMAS, CHARLES	2-2	100% 3-4 75.0%
			1 6:21	0-11*	15 ft Lane Jump shot by LESTER, CASEY	1-1	100% 4-5 80.0%
REB: 0 A: 0 BLK: 0 TO: 2 PF: 1 S: 0 FT: 0-0 00.0% FG: 0-2 00.0%			1 6:19 REB: 3 A: 1 BLK: 0 TO: 0 PF: 0 S: 2 FT: 2-2 100% FG: 4-5 80.0%			No. 1 PLEASURE RIDGE PARK TIME - O U T	
		Sub In: IVORY, WILLIE Out: LOCKHART, MIKE Sub In: MIMS, LaRON Out: TAYLOR, DOMINICK	1 6:19				
1	2	Foul on HOOVER, SHAWN	1 6:04				
			1 5:53		Foul on SIMPSON, JEREMY	1	1
			1 5:42				
2-2	100%	2-2 100%	1 5:35		Foul on LESTER, CASEY	1	2
1			1 5:35	*2-11			
1-4	25.0%	1-6 16.6%	1 5:19				
1-1	100%	2-7 28.5%	1 5:09	*4-11			
			1 4:37	*6-11			
0-1	00.0%	2-3 66.6%	1 4:37		Foul on COX, TODD	1	3
2			1 4:25				
			1 4:05	6-13*	Layup Off Fast Break by BLANTON, NATHAN	1-2	50.0% 5-12 41.6%
1-2	50.0%	3-11 27.2%	1 3:41	*8-13			
			1 3:39		Sub In: HUDSON, KEVIN Out: BLANTON, NATHAN		
REB: 6 A: 0 BLK: 0 TO: 4 PF: 4 S: 3 FT: 2-3 66.6% FG: 3-11 27.2%			1 3:39 REB: 9 A: 1 BLK: 0 TO: 4 PF: 3 S: 2 FT: 2-2 100% FG: 5-12 41.6%			T I M E - O U T HARLAN No. 1	
		Sub In: LOCKHART, MIKE Out: HOOVER, SHAWN	1 3:39				
1	5	Foul on TAYLOR, CHARLES	1 3:39		Sub In: BLANTON, NATHAN Out: SIMPSON, JEREMY		
1	6	Foul on MIMS, LaRON	1 3:35				
			1 3:32				
			1 3:25	8-15*	Driving Layup by LESTER, CASEY Assist by BLANTON, NATHAN	2-2	100% 6-13 46.1%
		Sub In: FEY, BRANDON Out: MIMS, LaRON	1 3:15			1	2
			1 3:15	8-17*	Driving Layup by THOMAS, CHARLES Assist by BLANTON, NATHAN	3-5	60.0% 7-14 50.0%
2-7	28.5%	4-12 33.3%	1 2:53	*10-17		2	3
2-3	66.6%	5-13 38.4%	1 2:37	*12-17			
1			1 2:20				
3			1 2:20				
			1 2:20	12-19*	COX, TODD, 1 & Bonus made both	2-2	100% 4-4 100%
			1 2:20		Sub In: SIMPSON, JEREMY Out: BLANTON, NATHAN		
3-8	37.5%	6-14 42.8%	1 2:16	*15-19			
2			1 1:56				
			1 1:56		COX, TODD, 1 & Bonus missed 1st	2-3	66.6% 4-5 80.0%
			1 1:55		Foul on LESTER, CASEY	2	4
			1 1:55		Sub In: BLANTON, NATHAN Out: LESTER, CASEY		
1	9	Player Control Foul on IVORY, WILLIE Sub In: HOOVER, SHAWN Out: LOCKHART, MIKE Sub In: MIMS, LaRON Out: TAYLOR, CHARLES	1 1:32				
			1 1:32				
			1 1:32				

Player	Team	PLEASURE RIDGE PARK
1-2	50.0%	7-16 43.7% Driving Layup by HOOVER, SHAWN
1-1	100%	8-17 47.0% Layup Off Fast Break by MIMS, LaRON
1		2 Assist by IVORY, WILLIE
3-4	75.0%	9-18 50.0% 8 ft Lane Jump shot by IVORY, WILLIE

Time	Score	HARLAN	Player	Team
1	1:28	*17-19		
1	1:01	*19-19		
1	0:45	19-21*	Layup Off Fast Break by THOMAS, CHARLES	4-6 66.6% 8-17 47.0%
1	0:05	*21-21		

HARLAN "GREEN DRAGONS" vs PLEASURE RIDGE PARK "PANTHERS"
1st Half Play by Play

PAGE : 3

Tip off at 11:30 A.M. on 03/18/95 at BOY'S SHEET 16, LEXINGTON
Produced by the KHSAA SHEET 16 Stat Crew with FINAL III
Final III is a product of STONE CONSULTING SERVICE (606)273-3941

Player	Team	PLEASURE RIDGE PARK	Time	Score	HARLAN	Player	Team		
TAYLOR, CHARLES, TAYLOR, DOMINICK, MIMS, LaRON, FEY, BRANDON, HOOVER, SHAWN					LESTER, CASEY, HUDSON, KEVIN, THOMAS, CHARLES, SIMPSON, JEREMY, COX, TODD				
2-2	100%	10-19 52.6%	2 7:56	*23-21					
Ball to PANTHERS					2 7:55	Foul on SIMPSON, JEREMY	2 5		
Driving Flip by MIMS, LaRON					2 7:55	*24-21			
1-1	100%	3-4 75.0%	2 7:47	24-23*	4 ft Lane Bank by COX, TODD	2-8	25.0% 9-18 50.0%		
MIMS, LaRON, 1 Free Throw made					Assist by THOMAS, CHARLES				
4-10	40.0%	11-21 52.3%	2 7:17	*26-23		1	6		
10 ft Right Side Jump shot by TAYLOR, CHARLES					2 7:05	Foul on THOMAS, CHARLES			
Sub In: IVORY, WILLIE Out: FEY, BRANDON					2 7:05	Sub In: BLANTON, NATHAN Out: HUDSON, KEVIN			
2	10		2 6:38	26-25*	7 ft Lane Bank by COX, TODD	3-9	33.3% 10-19 52.6%		
Foul on MIMS, LaRON					2 6:12				
Sub In: MCGOVERN, DAVID Out: TAYLOR, CHARLES					2 6:12	26-27*	2-2	100% 6-7 85.7%	
3-3	100%	12-24 50.0%	2 6:01	*28-27	LESTER, CASEY, 1 & Bonus made both				
Driving Layup by MIMS, LaRON					2 5:57	Sub In: HUDSON, KEVIN Out: THOMAS, CHARLES			
4-5	80.0%	13-26 50.0%	2 5:39	*30-27					
5-6	83.3%	14-27 51.8%	2 5:19	*32-27					
1	3		2 5:17		Sub In: THOMAS, CHARLES Out: LESTER, CASEY				
Assist by MIMS, LaRON					2 5:17				
REB: 8 A: 3 BLK: 1 TO: 6 PF: 10					REB: 15 A: 4 BLK: 0 TO: 12 PF: 6				
S: 9 FT: 3-4 75.0% FG: 14-27 51.8%					S: 2 FT: 6-7 85.7% FG: 10-19 52.6%				
Sub In: TAYLOR, CHARLES Out: MIMS, LaRON					2 5:17				
Sub In: FEY, BRANDON Out: TAYLOR, DOMINICK					2 5:17				
3	11		2 5:17	32-29*	Layup Off Fast Break by THOMAS, CHARLES	5-7	71.4% 11-20 55.0%		
Player Control Foul on TAYLOR, CHARLES					2 4:46	32-31*	4 ft Lane Bank by COX, TODD	4-10	40.0% 12-21 57.1%
Sub In: LOCKHART, MIKE Out: HOOVER, SHAWN					2 4:27				
Sub In: MIMS, LaRON Out: TAYLOR, CHARLES					2 4:26				
2-2	100%	5-6 83.3%	2 4:14		Foul on COX, TODD	2	7		
LOCKHART, MIKE, 1 & Bonus made both					2 4:14	*34-31			
3	12		2 4:05	34-33*	Driving Layup by COX, TODD	5-11	45.4% 13-23 56.5%		
Player Control Foul on MIMS, LaRON					2 3:26	34-35*	Driving Layup by COX, TODD	6-12	50.0% 14-24 58.3%
Sub In: TAYLOR, DOMINICK Out: MIMS, LaRON					Assist by SIMPSON, JEREMY				
2	13		2 3:16			1	5		
Foul on LOCKHART, MIKE					2 3:16				
Sub In: BEDFORD, GREG Out: FEY, BRANDON					2 3:16	Sub In: LESTER, CASEY Out: THOMAS, CHARLES			
2-2	100%	7-8 87.5%	2 3:03			0-2	00.0% 6-9 66.6%		
1-2	50.0%	15-32 46.8%	2 3:03		SIMPSON, JEREMY, 2 Free Throws missed both				
2-5	40.0%	16-33 48.4%	2 2:24		Foul on BLANTON, NATHAN	1	8		
TAYLOR, DOMINICK, 1 & Bonus made both					2 2:24				
10 ft Right Side Driving by TAYLOR, DOMINICK					2 2:24	Sub In: THOMAS, CHARLES Out: SIMPSON, JEREMY			
Driving Reverse Lay Up by HOOVER, SHAWN					2 2:24	*36-35			
3-4	75.0%	15-27 55.5%	2 2:09	*38-35		3	6		
Assist by BLANTON, NATHAN					2 1:31	*40-35			
Layup Off Fast Break by LESTER, CASEY					2 1:18	40-37*			
Sub In: THOMAS, CHARLES Out: SIMPSON, JEREMY					Assist by BLANTON, NATHAN				
REB: 12 A: 3 BLK: 1 TO: 8 PF: 13					REB: 19 A: 6 BLK: 1 TO: 14 PF: 8				
S: 9 FT: 7-8 87.5% FG: 16-33 48.4%					S: 2 FT: 6-9 66.6% FG: 15-27 55.5%				
No. 2 PLEASURE RIDGE PARK					T I M E - O U T				
2	0:29		2 0:29		Sub In: SIMPSON, JEREMY Out: COX, TODD				
2	0:29		2 0:29		Sub In: KAUFFMAN, JOEL Out: LESTER, CASEY				

Player Team PLEASURE RIDGE PARK

Time Score

HARLAN

Player Team

2 0:00

Rebound by BLANTON, NATHAN

D-1 Tot-1 D-1 Tot-20

VISITORS (Last Name, First)

NO.	HARLAN	Tot FG		3-POINT		FT		Rebounds			PF	TP	A	TO	BLK	S	TIME				
		FG	FGA	FG	FGA	FT	FTA	OFF	DEF	TOT											
22	THOMAS, CHARLES	5	8	1	1	2	2	1	5	6	1	13	1	3	0	0	14:28				
40	SIMPSON, JEREMY	0	0	0	0	0	2	2	0	2	2	0	1	1	0	2	12:46				
44	COX, TODD	6	13	0	0	0	3	2	5	7	2	14	0	1	1	0	15:31				
10	LESTER, CASEY	3	4	0	1	2	2	0	2	2	2	8	1	4	0	0	11:35				
04	BLANTON, NATHAN	1	2	0	0	0	0	1	2	3	1	2	3	2	0	0	14:40				
12	HUDSON, KEVIN	0	0	0	0	0	0	0	0	0	0	0	0	3	0	0	10:31				
24	KAUFFMAN, JOEL	0	0	0	0	0	0	0	0	0	0	0	0	0	0	0	0:29				
TEAM REBOUNDS (INCLUDED IN TOTALS)																					
TOTALS		15	27	1	2	6	9	6	14	20	8	37	6	14	1	2	80				
Percentages:		HALF		FG		15/27		55.6%		3-PT.		17/2		50.0%		FT		6/9		66.7%	
		Period 1				8/17		47.1%				1/1		100.0%		4/5		80.0%			
		Period 2				7/10		70.0%				0/1		0.0%		2/4		50.0%			

HOME (Last Name, First)

NO.	PLEASURE RIDGE PARK	Tot FG		3-POINT		FT		Rebounds			PF	TP	A	TO	BLK	S	TIME				
		FG	FGA	FG	FGA	FT	FTA	OFF	DEF	TOT											
43	HOOVER, SHAWN	2	5	0	0	0	0	0	2	2	1	4	0	1	0	0	11:51				
32	NELSON, GILWAN	1	1	0	0	0	1	0	1	1	3	2	1	1	1	0	5:40				
42	LOCKHART, MIKE	0	0	0	0	0	2	0	1	2	2	2	0	1	0	0	5:50				
23	TAYLOR, DOMINICK	1	2	0	0	2	2	2	1	3	0	4	0	1	0	1	7:55				
15	TAYLOR, CHARLES	4	12	1	5	2	2	1	0	1	3	11	0	1	0	4	9:07				
30	IVORY, WILLIE	5	8	0	1	0	0	1	1	2	1	10	1	1	1	2	13:24				
25	HIMS, LARON	3	4	0	0	1	1	0	1	1	3	7	1	2	0	0	8:14				
21	FEY, BRANDON	0	0	0	0	0	0	0	0	0	0	0	0	0	0	0	6:24				
10	MCGOVERN, DAVID	0	2	0	1	0	0	0	0	0	0	0	0	0	0	2	8:32				
31	BEDFORD, GREG	0	0	0	0	0	0	0	0	0	0	0	0	0	0	0	3:03				
TEAM REBOUNDS (INCLUDED IN TOTALS)																					
TOTALS		16	34	1	7	7	8	4	8	12	13	40	3	8	1	9	80				
Percentages:		HALF		FG		16/34		47.1%		3-PT.		17/7		14.3%		FT		7/8		87.5%	
		Period 1				9/18		50.0%				1/4		25.0%		2/3		66.7%			
		Period 2				7/16		43.8%				0/3		0.0%		5/5		100.0%			

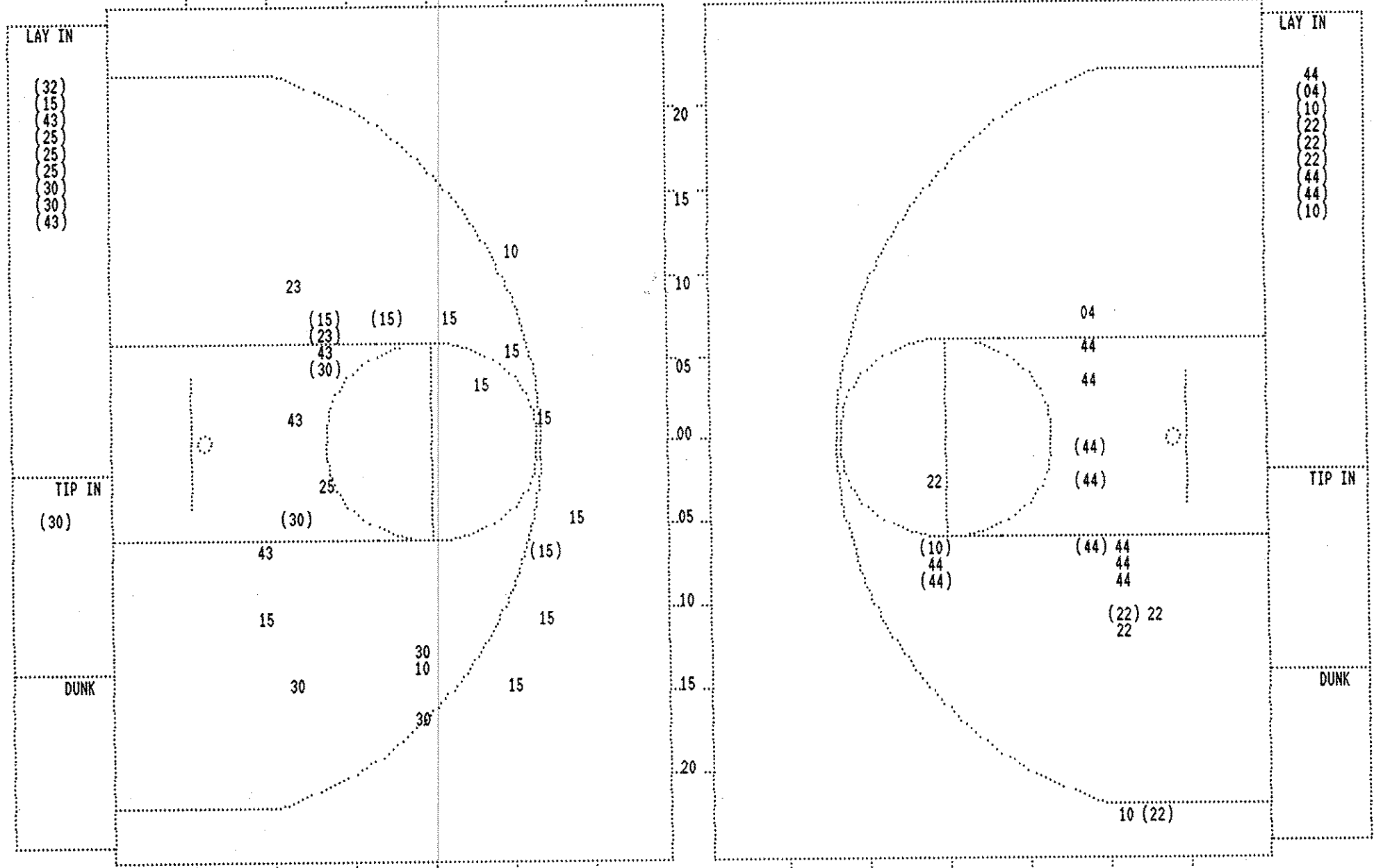
OFFICIALS: Barry Barnes, Lyman Brown, Alt-Keith Clary
 Technicals: None

SCORE BY PERIODS		
HARLAN	21	16 = 37
PLEASURE RIDGE PARK	21	19 = 40

Attendance: 13,105

COMMENTS: POINTS OFF TURNOVERS
 HARLAN 6 PLEASURE RIDGE PARK 20 HARLAN 4 PLEASURE RIDGE PARK 2

SECOND CHANCE POINTS



PLEASURE RIDGE PARK					
Player			Player		
43 - HOOVER, SH	2 / 5	40.0%	25 - MIMS, LaRO	3 / 4	75.0%
32 - NELSON, GI	1 / 1	100.0%	30 - IVORY, WIL	5 / 8	62.5%
23 - TAYLOR, DOM	1 / 2	50.0%			
15 - TAYLOR, CH	4 / 12	33.3%			
10 - McGOVERN,	0 / 2	0.0%			
Layups	1-9 Ft	10-15 Ft	Over 15 Ft	3 Pointers	Total
10 / 10	2 / 6	3 / 6	0 / 5	1 / 7	16 / 34
100.0%	33.3%	50.0%	0.0%	14.3%	47.1%

HARLAN					
Player			Player		
22 - THOMAS, CH	5 / 8	62.5%			
44 - COX, TODD	6 / 13	46.1%			
10 - LESTER, CA	3 / 4	75.0%			
04 - BLANTON, N	1 / 2	50.0%			
Layups	1-9 Ft	10-15 Ft	Over 15 Ft	3 Pointers	Total
8 / 9	3 / 9	2 / 6	1 / 1	1 / 2	15 / 27
88.9%	33.3%	33.3%	100.0%	50.0%	55.6%

HARLAN "GREEN DRAGONS" vs PLEASURE RIDGE PARK "PANTHERS"

2nd Half Play by Play

PAGE : 1

Tip off at 11:30 A.M. on 03/18/95 at BOY'S SWEET 16, LEXINGTON
 Produced by the KHSAA SWEET 16 Stat Crew with FINAL III
 Final III is a product of STONE CONSULTING SERVICE (606)273-3941

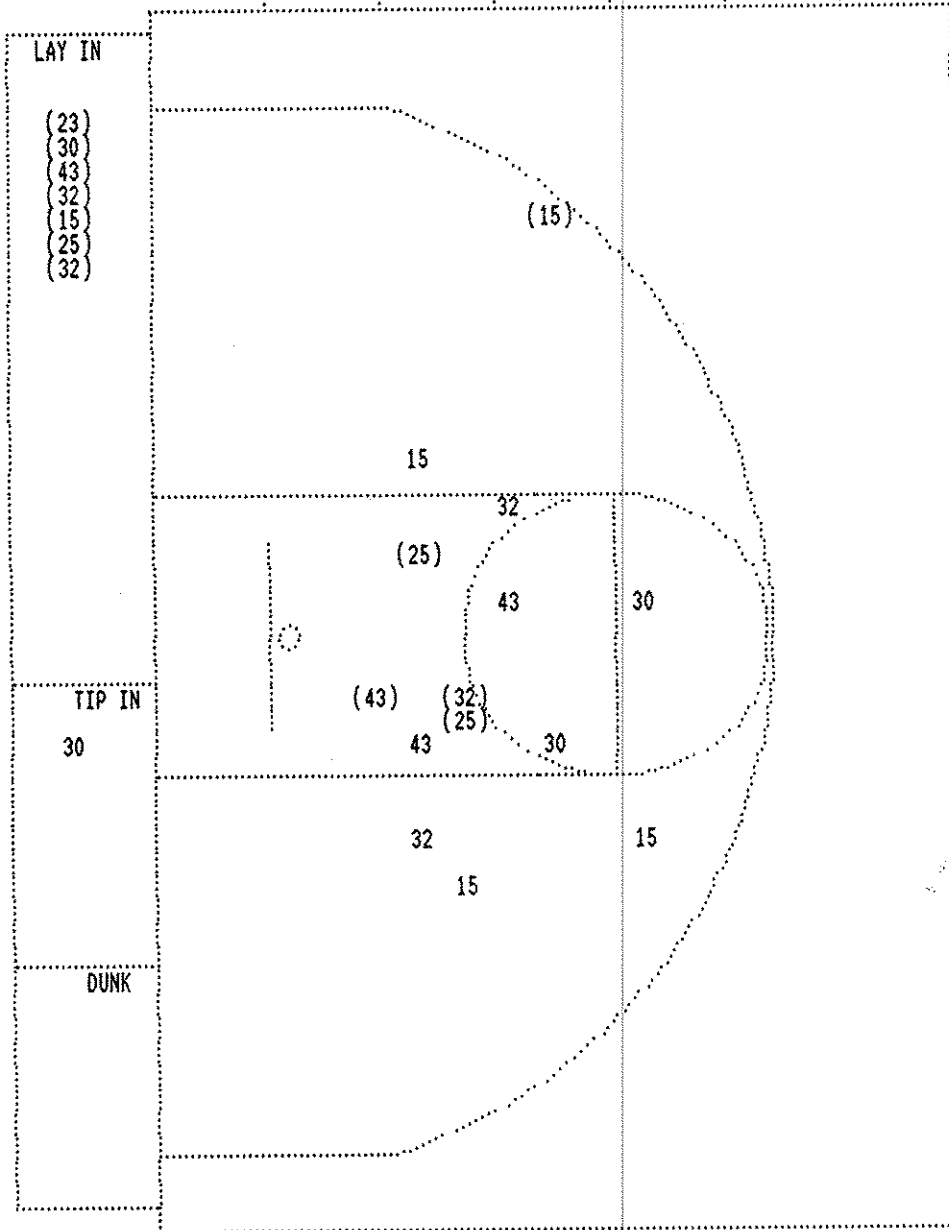
PLEASURE RIDGE PARK				HARLAN			
Player	Team			Time	Score	Player	Team
HOOVER, SHAWN, NELSON, GILWAN, LOCKHART, MIKE, TAYLOR, DOMINICK, TAYLOR, CHARLES				THOMAS, CHARLES, SIMPSON, JEREMY, COX, TODD, LESTER, CASEY, BLANTON, NATHAN			
				Ball to GREEN DRAGONS			
				3	7:43 40-39*	4 ft Lane Bank by THOMAS, CHARLES	
						6-9	66.6% 16-29 55.1%
						2	7
						3	1
1-2	50.0%	8-10	80.0%	HOOVER, SHAWN, 2 Free Throws made 1st missed 2nd			
2-3	66.6%	17-35	48.5%	Layup Off Fast Break by TAYLOR, DOMINICK			
3-3	100%	9-11	81.8%	TAYLOR, DOMINICK, 1 Free Throw made			
3		1		Foul on LOCKHART, MIKE			
				Sub In: IVORY, WILLIE Out: LOCKHART, MIKE			
				3	6:40		
				3	6:40		
				3	6:40	44-42* 3 pt 20 ft Left Base Line Jump shot	
						7-10	70.0% 17-31 54.8%
						4	8
						7-16	43.7% 18-33 54.5%
5-14	35.7%	18-37	48.6%	3 pt 21 ft Right Side Jump shot by TAYLOR, CHARLES			
				3	6:12 44-44*	Follow Layup by COX, TODD	
				3	6:02 *47-44		
				3	5:41	Foul on BLANTON, NATHAN	
				3	5:40	Sub In: HUDSON, KEVIN Out: BLANTON, NATHAN	
				3	5:39	Foul on COX, TODD	
1-4	25.0%	9-13	69.2%	HOOVER, SHAWN, 2 Free Throws missed both			
6-10	60.0%	19-39	48.7%	Layup Off Fast Break by IVORY, WILLIE			
				3	4:55 *49-44		
				3	4:53	REB: 14 A: 3 BLK: 1 TO: 9 PF: 1	
				T I M E - 0 U T		HARLAN No. 1	
						S: 2 FT: 6-9 66.6% FG: 18-34 52.9%	
				3	4:30	Foul on COX, TODD	
				3	4:30	Sub In: BLANTON, NATHAN Out: COX, TODD	
1-2	50.0%	10-15	66.6%	IVORY, WILLIE, 2 Free Throws missed 1st made 2nd			
				3	4:30 *50-44		
				3	4:04 50-46*	Layup Off Fast Break by LESTER, CASEY	
						4-6	66.6% 19-36 52.7%
						2	9
				3	3:39	Foul on TAYLOR, CHARLES	
				3	3:39	Sub In: MIMS, LaRON Out: TAYLOR, CHARLES	
				3	3:39	Sub In: FEY, BRANDON Out: NELSON, GILWAN	
				3	3:39	Sub In: McGOVERN, DAVID Out: TAYLOR, DOMINICK	
4-5	80.0%	20-41	48.7%	6 ft Lane Driving by MIMS, LaRON			
				3	3:32 *52-46		
				3	3:32	Foul on SIMPSON, JEREMY	
				3	3:32 *53-46		
2-2	100%	11-16	68.7%	MIMS, LaRON, 1 Free Throw made			
				3	3:27	Sub In: KAUFFMAN, JOEL Out: SIMPSON, JEREMY	
				3	3:27	Foul on IVORY, WILLIE	
				3	3:27	Sub In: NELSON, GILWAN Out: IVORY, WILLIE	
2-2	100%	21-42	50.0%	6 ft Lane Jump shot by NELSON, GILWAN			
3-6	50.0%	22-43	51.1%	3 ft Lane Driving by HOOVER, SHAWN			
4-7	57.1%	23-44	52.2%	Layup Off Fast Break by HOOVER, SHAWN			
				3	3:27 53-48*	LESTER, CASEY, 2 Free Throws made both	
				3	3:21 *55-48		
				3	2:59 *57-48		
				3	2:45 *59-48		
				3	2:29 59-50*	Driving Layup by LESTER, CASEY	
				3	1:57 59-52*	Driving Layup by THOMAS, CHARLES	
						5-8	62.5% 20-40 50.0%
						8-14	57.1% 21-42 50.0%
						1	10
				3	1:16	Sub In: IVORY, WILLIE Out: HOOVER, SHAWN	
				3	1:16	Sub In: COX, TRAVIS Out: THOMAS, CHARLES	
				3	1:08		
				3	0:54 59-54*	4 ft Lane Bank by LESTER, CASEY	
				3	0:24 59-56*	Follow Layup by COX, TRAVIS	
						6-9	66.6% 22-43 51.1%
						1-1	100% 23-45 51.1%

PLEASURE RIDGE PARK				Time	Score	HARLAN	Player	Team
McGOVERN, DAVID, NELSON, GILWAN, IVORY, WILLIE, HOOVER, SHAWN, MIMS, LaRON						HUDSON, KEVIN, BLANTON, NATHAN, KAUFFMAN, JOEL, THOMAS, CHARLES, LESTER, CASEY		
Ball to PANTHERS				4	7:50	Foul on BLANTON, NATHAN	4	7
Sub In: TAYLOR, DOMINICK Out: MIMS, LaRON				4	7:50			
3-6	50.0%	13-18	72.2%	4	7:50	*61-56	9-15	60.0% 24-46 52.1%
HOOVER, SHAWN, 1 & Bonus made both				4	7:43	61-58* Layup Off Fast Break by THOMAS, CHARLES Assist by HUDSON, KEVIN	2	11
Sub In: FEY, BRANDON Out: TAYLOR, DOMINICK				4	7:12			
Sub In: MIMS, LaRON Out: McGOVERN, DAVID				4	7:12			
5-6	83.3%	24-48	50.0%	4	7:12	*63-58		
6 ft Lane Driving by MIMS, LaRON				4	6:46			
Assist by NELSON, GILWAN				4	6:33	63-60* 6 ft Lane Turnaround by LESTER, CASEY	7-11	63.6% 25-47 53.1%
Foul on IVORY, WILLIE				4	6:22	Foul on HUDSON, KEVIN	1	8
				4	6:22	Sub In: COX, TODD Out: KAUFFMAN, JOEL		
				4	6:22	Sub In: SIMPSON, JEREMY Out: LESTER, CASEY		
2-3	66.6%	15-20	75.0%	4	6:22	*65-60		
NELSON, GILWAN, 2 Free Throws made both				4	6:22	65-62* 4 ft Lane Driving by COX, TODD	8-18	44.4% 26-48 54.1%
Sub In: McGOVERN, DAVID Out: NELSON, GILWAN				4	5:48			
Player Control Foul on HOOVER, SHAWN				4	5:39	65-64* Driving Layup by THOMAS, CHARLES	10-16	62.5% 27-49 55.1%
				4	5:25	Foul on HUDSON, KEVIN	2	9
Sub In: TAYLOR, CHARLES Out: McGOVERN, DAVID				4	5:25			
MIMS, LaRON, 2 Free Throws made 1st missed 2nd				4	5:25	*66-64		
Sub In: NELSON, GILWAN Out: MIMS, LaRON				4	5:13			
				4	5:13	Sub In: LESTER, CASEY Out: SIMPSON, JEREMY		
3-3	100%	25-49	51.0%	4	5:13	*68-64		
Driving Layup by NELSON, GILWAN				4	4:57			
Assist by TAYLOR, CHARLES				4	4:57	Sub In: SIMPSON, JEREMY Out: BLANTON, NATHAN		
Player Control Foul on NELSON, GILWAN				4	4:40	*70-64		
6-16	37.5%	26-50	52.0%	4	4:40	Foul on HUDSON, KEVIN	3	10
Sub In: MIMS, LaRON Out: NELSON, GILWAN				4	4:40			
TAYLOR, CHARLES, 1 Free Throw missed				4	4:33	70-66* 4 ft Lane Bank by THOMAS, CHARLES	11-18	61.1% 28-51 54.9%
Foul on HOOVER, SHAWN				4	4:33	70-67* THOMAS, CHARLES, 1 Free Throw made	3-3	100% 9-12 75.0%
				4	4:06	Foul on THOMAS, CHARLES	2	11
1-2	50.0%	17-25	68.0%	4	4:06	*71-67		
FEY, BRANDON, 1 & Bonus made 1st missed 2nd				4	3:20	71-69* Driving Layup by COX, TODD Assist by LESTER, CASEY	9-19	47.3% 29-52 55.7%
Sub In: NELSON, GILWAN Out: FEY, BRANDON				4	3:07	*73-69	3	12
				4	2:50			
REB: 19 A: 6 BLK: 1 TO: 14 PF: 8				4	2:50			
S: 15 FT: 17-25 68.0% FG: 27-53 50.9%						HARLAN No. 2	REB: 37 A: 12 BLK: 1 TO: 24 PF: 11	
							S: 3 FT: 9-12 75.0% FG: 29-52 55.7%	
Foul on MIMS, LaRON				4	2:28			
				4	2:28	73-70* THOMAS, CHARLES, 1 & Bonus made 1st missed 2nd	4-5	80.0% 10-14 71.4%
				4	2:24	Technical foul on HARLAN BENCH		
REB: 19 A: 6 BLK: 1 TO: 14 PF: 9				4	2:24			
S: 15 FT: 17-25 68.0% FG: 27-54 50.0%						HARLAN No. 3	REB: 39 A: 12 BLK: 2 TO: 24 PF: 11	
							S: 3 FT: 10-14 71.4% FG: 29-52 55.7%	
Technical foul for excessive timeout.				4	2:24	*74-70		
3-5	60.0%	18-27	66.6%	4	1:33	74-72* 6 ft Lane Turnaround by COX, TODD	10-20	50.0% 30-53 56.6%

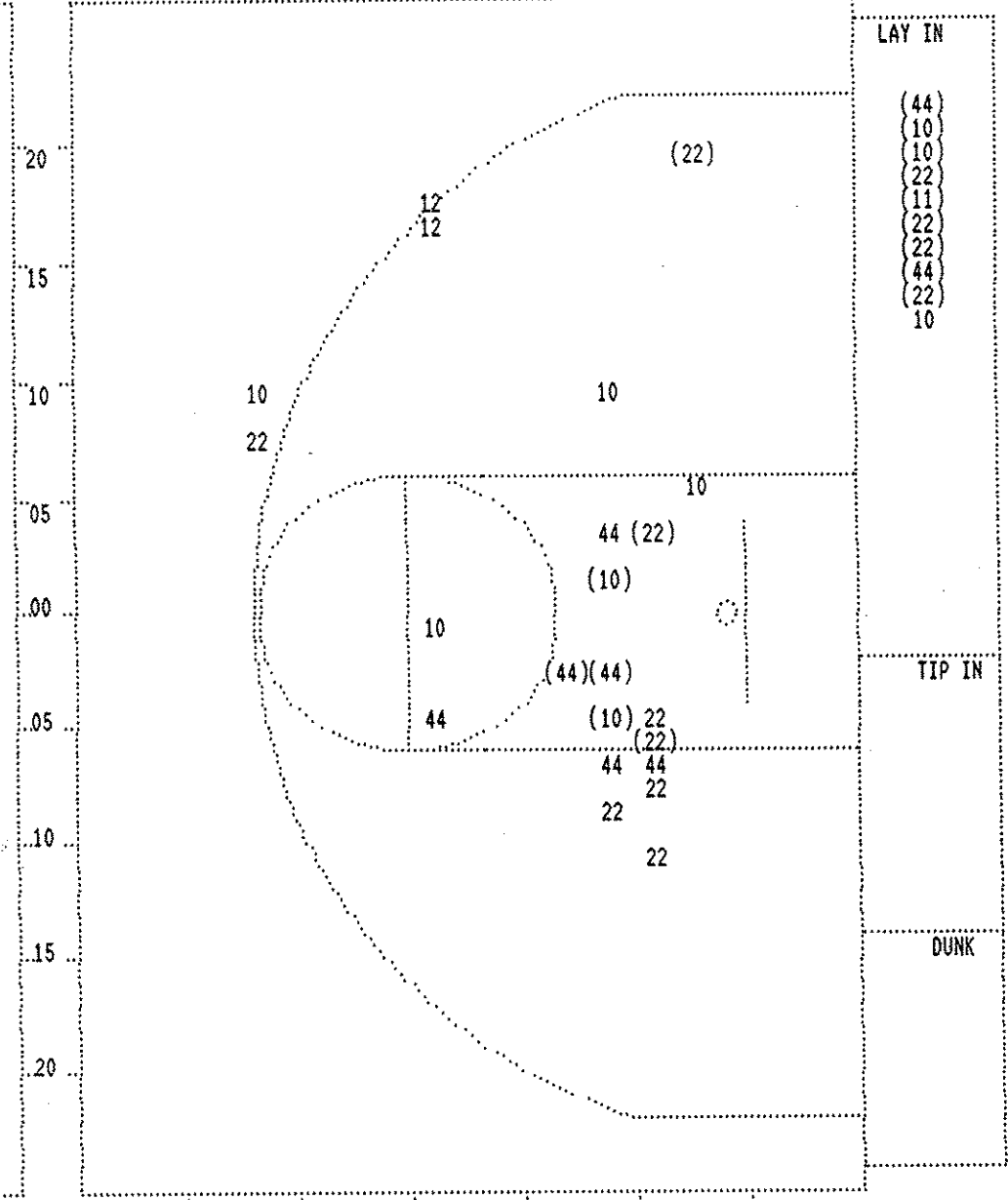
2nd Half Play by Play (continued)

Player	Team	PLEASURE RIDGE PARK
5-7	71.4%	20-29 68.9% TAYLOR, CHARLES, 1 & Bonus made both
3-4	75.0%	22-31 70.9% Sub In: FEY, BRANDON Out: MIMS, LARON FEY, BRANDON, 1 & Bonus made both
3-5	60.0%	23-33 69.6% NELSON, GILWAN, 1 & Bonus made 1st missed 2nd
4-6	66.6%	28-56 50.0% Layup Off Fast Break by NELSON, GILWAN

Time	Score	HARLAN	Player	Team
4 1:18		Assist by LESTER, CASEY	4	13
4 1:18	*76-72	Foul on HUDSON, KEVIN	4	12
4 0:55		Foul on LESTER, CASEY	3	13
4 1:18				
4 0:55	*78-72			
4 0:37	78-74*	Driving Layup by THOMAS, CHARLES	12-20	60.0% 31-56 55.3%
4 0:17		Foul on HUDSON, KEVIN	5	14
4 0:17		Sub In: BLANTON, NATHAN Out: HUDSON, KEVIN		
4 0:17	*79-74			
4 0:05	*81-74			
4 0:00		3 pt Shot by LESTER, CASEY, missed	7-13	53.8% 31-58 53.4%



PLEASURE RIDGE PARK					
Player			Player		
43 - HOOVER, SH	2 / 4	50.0%	30 - IVORY, WIL	1 / 4	25.0%
32 - NELSON, GI	3 / 5	60.0%			
23 - TAYLOR, DOM	1 / 1	100.0%			
15 - TAYLOR, CH	2 / 5	40.0%			
25 - MINS, LaRO	3 / 3	100.0%			
Layups	1-9 Ft	10-15 Ft	Over 15 Ft	3 Pointers	Total
7 / 8	4 / 8	0 / 4	0 / 1	1 / 1	12 / 22



HARLAN					
Player			Player		
22 - THOMAS, CH	7 / 12	58.3%			
44 - COX, TODD	4 / 8	50.0%			
10 - LESTER, CA	4 / 9	44.4%			
11 - COX, TRAVI	1 / 1	100.0%			
12 - HUDSON, KE	0 / 2	0.0%			
Layups	1-9 Ft	10-15 Ft	Over 15 Ft	3 Pointers	Total
9 / 10	6 / 13	0 / 4	0 / 1	1 / 4	16 / 32